

Population Health Updates

November 2020



Cancer screenings

Diabetes

DME

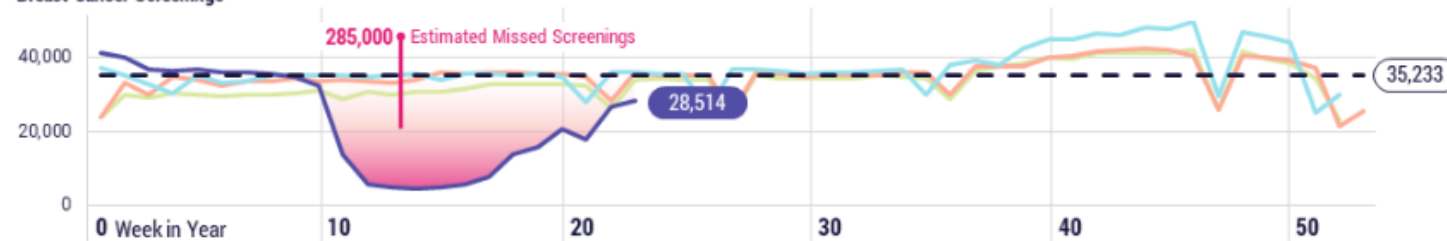
Impact of COVID-19 on Cancer Screenings

Cancer Screenings in the U.S.

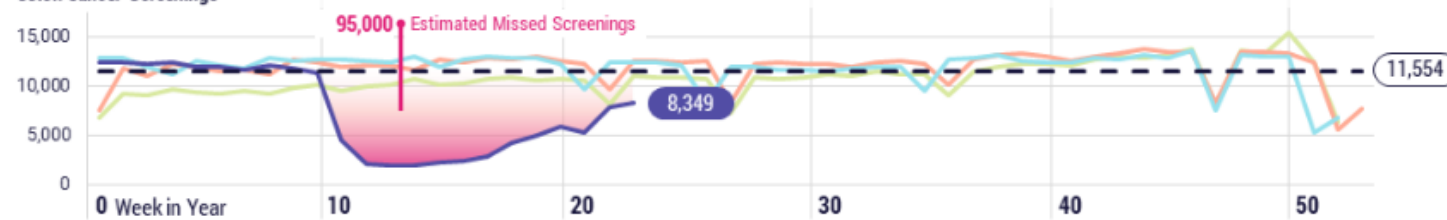


2020 2019 2018 2017 -- Mean Weekly Screening Volume 2017-Jan 19, 2020

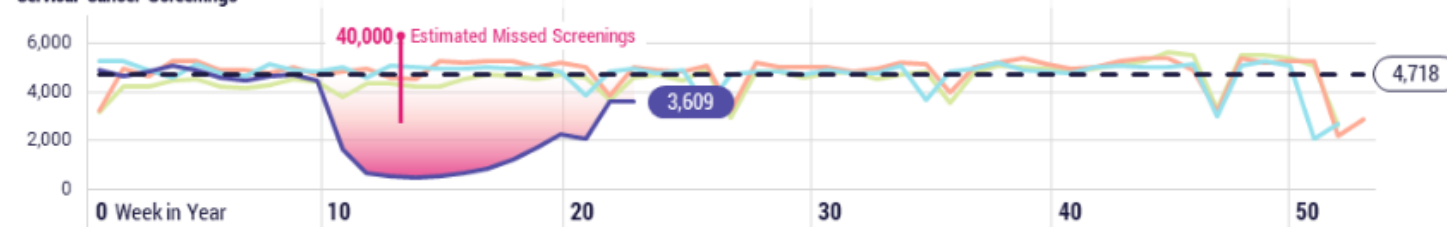
Breast Cancer Screenings



Colon Cancer Screenings



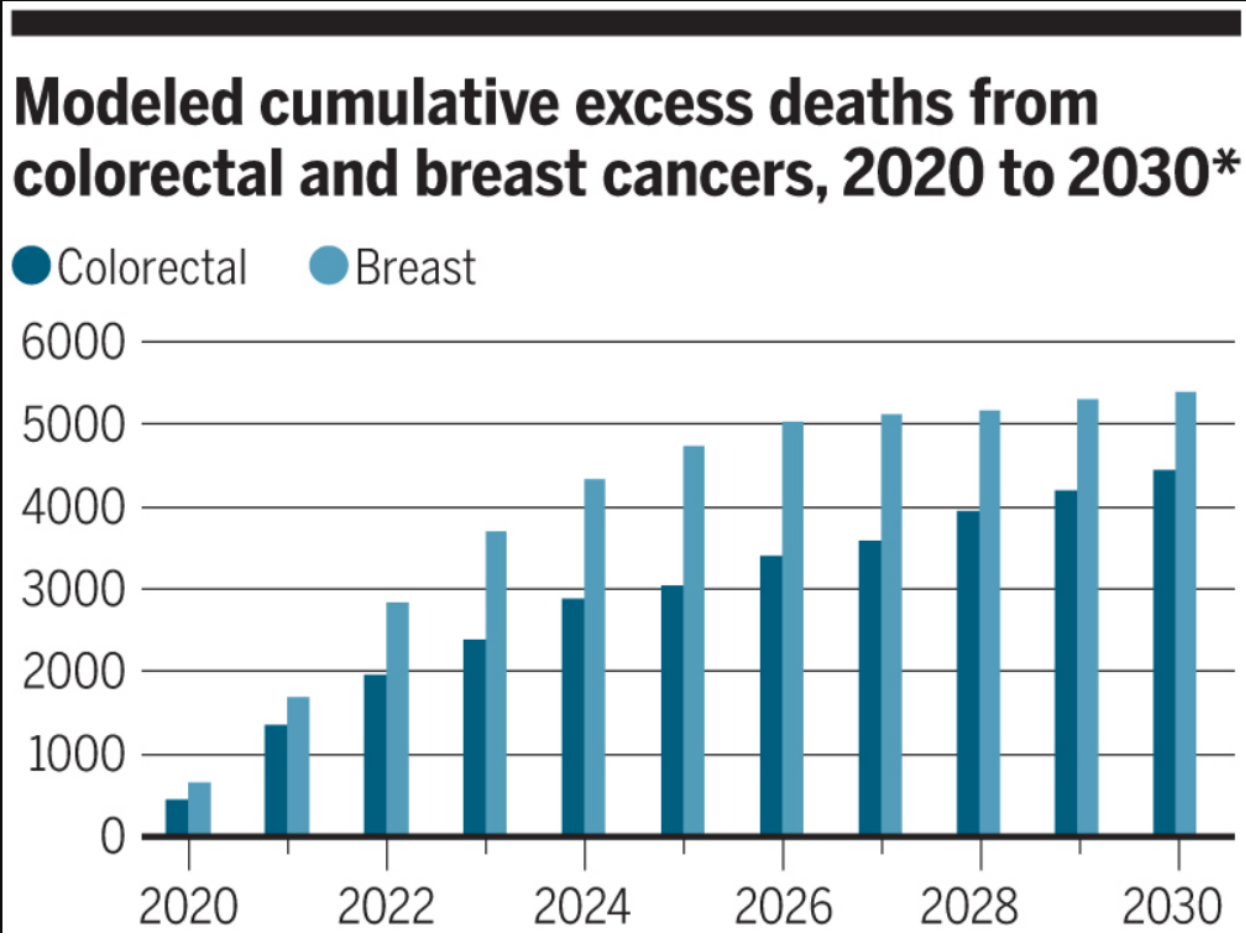
Cervical Cancer Screenings



Source: <https://ehrn.org/s?q=cancer%20screenings%20a%20second%20look>



Excess deaths from colorectal and breast cancer due to COVID-19



Source: <https://science.sciencemag.org/content/368/6497/1290>



Cancer Screenings and our population

- Cancer is common, but even more common in the homeless population. **Cancer-related death is twice as common for people experiencing homelessness as it is for the average for the adult U.S. population¹**
- Significant barriers to screening in our population:
 - Lack of insurance; competing priorities; lack of knowledge about importance or process; anticipated discomfort or misperceptions²
- Cancer screenings detect, prevent, and can cure cancer when caught early

¹ Asgary, R. (2018). Cancer screening in the homeless population. *The Lancet Oncology*, 19(7), 344-350

² Baggett TP, Chang Y, Porneala BC, Bharel M, Singer DE, Rigotti NA. Disparities in Cancer Incidence, Stage, and Mortality at Boston Health Care for the Homeless Program. *Am J Prev Med*. 2015;49(5):694–702. doi:10.1016/j.amepre.2015.03.038



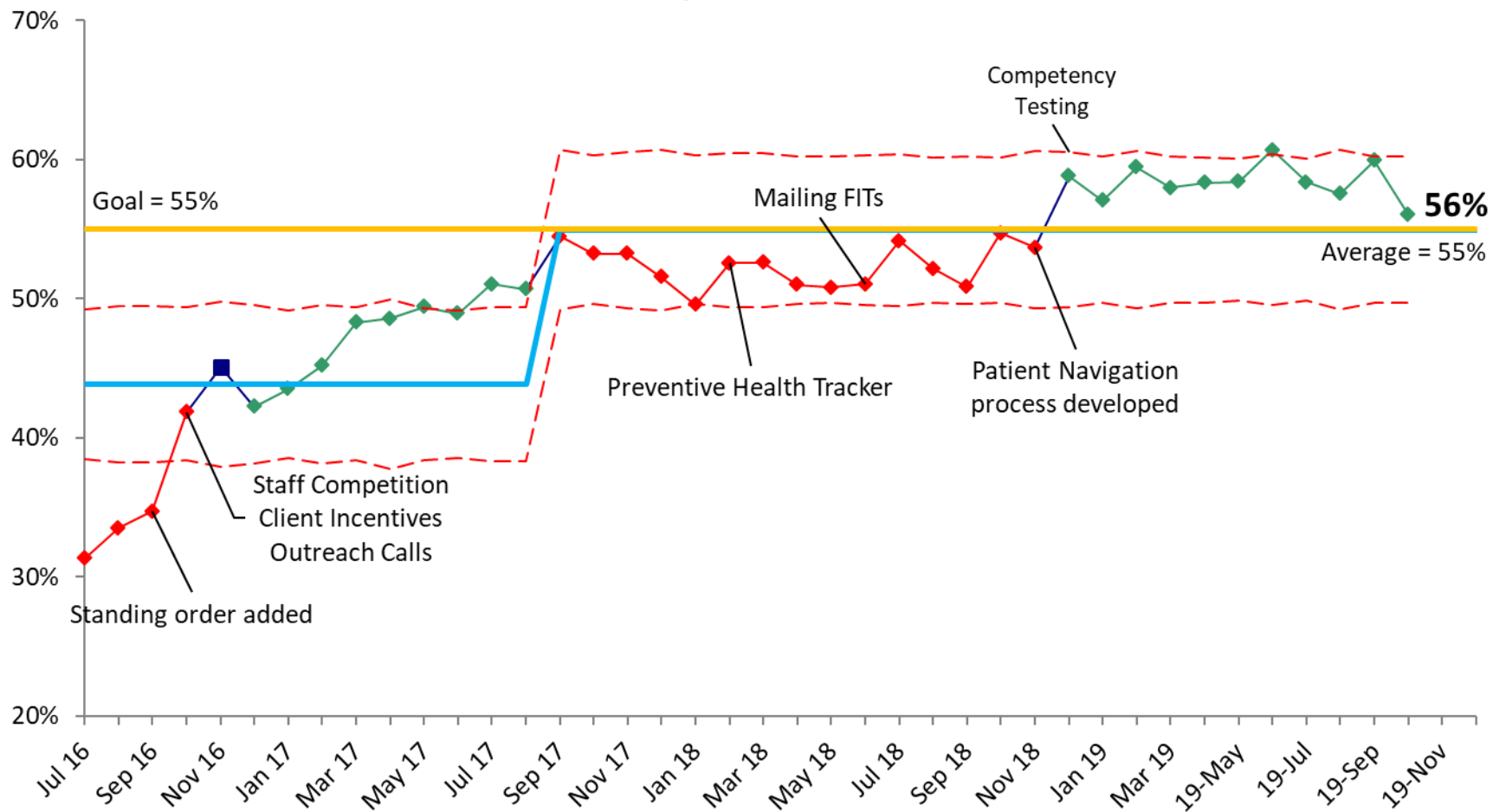
Reduce health disparities + projected excess deaths from delays in cancer screenings from COVID-19:

Keep the cancer screenings going!

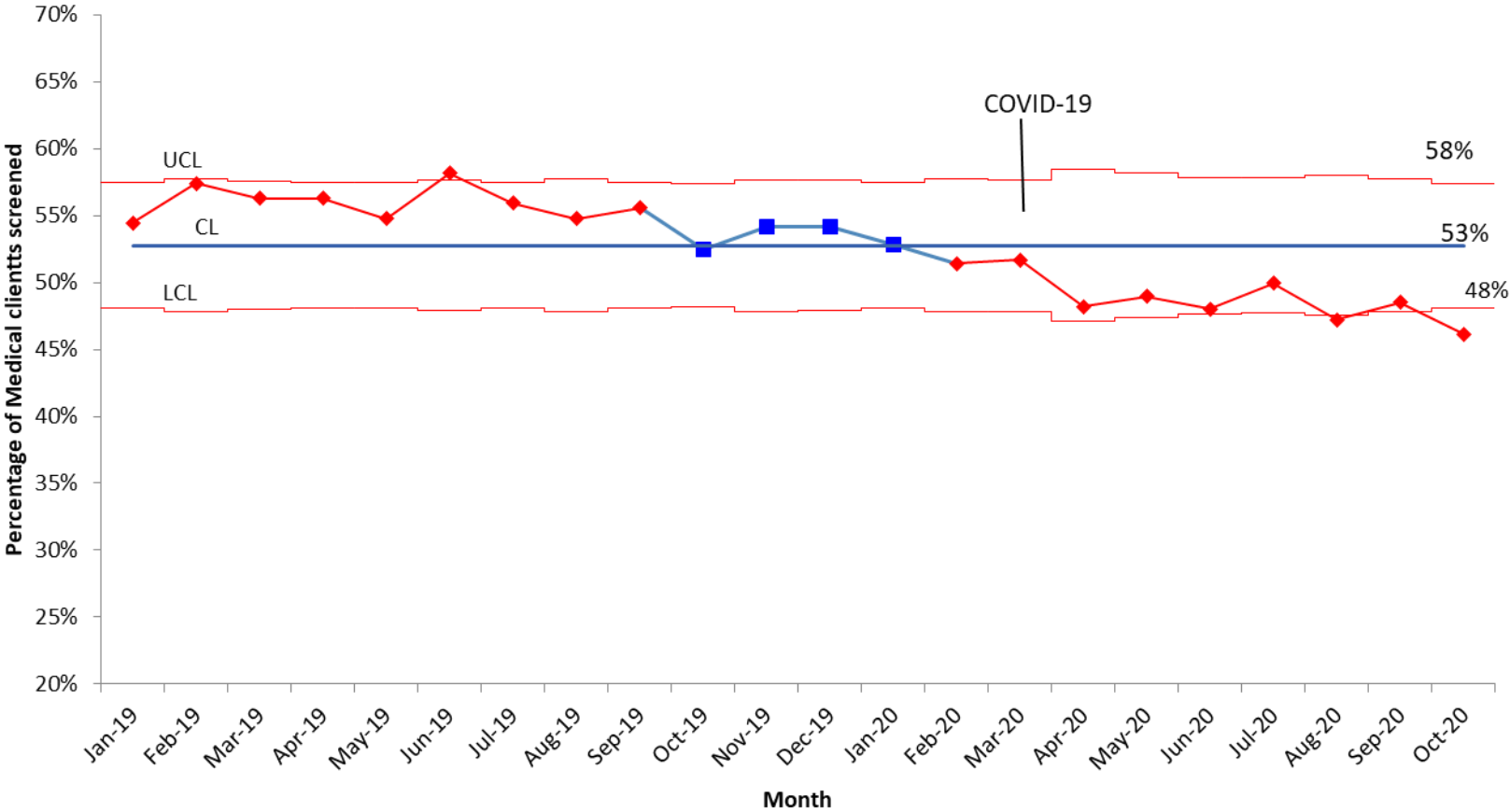
- Keep mailing: FITs, mammogram referrals
- Keep completing paps when possible
- The best test is the one that gets done!



HCH Colorectal Cancer Screening Rate July 2016 - October 2019

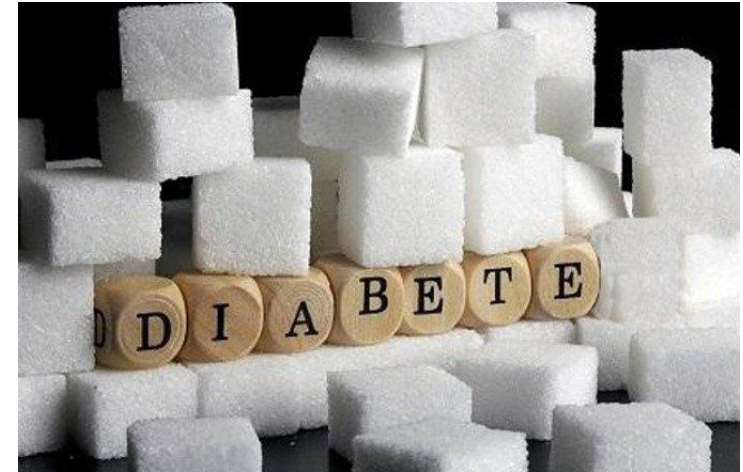


HCH Colorectal Cancer Screening Rates January 2019 - October 2020



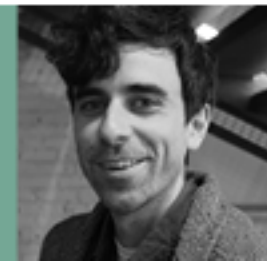
Diabetes

- CMAs have re-started calls to clients with diabetes who are past due for A1C
- Steel Team Pilot: continuing to discuss of clients with uncontrolled diabetes:
 - Initially started out discussing clients past due for care – not effective use of care team time since discussion centered around CHW work of re-engaging clients
 - Now discussing clients engaged in care – difficult due to lack of team alignment
 - Other ideas to promote good care team discussion and better client care?



Food insecurity

- Large food donation from Calvert Hall College Campus Ministries yesterday!
- Workgroup to come up with a proposal for in-house food pantry
 - We have funds from a donor that could be used to stock a food pantry
 - Space group figuring out if we have space for things like food storage
 - Biggest challenges: storage space and capacity of staff to maintain the pantry on a continual basis



Durable Medical Equipment (DME)



- Pilot with home BP cuffs and scales went well!
- Criteria for client engagement with medical team members was achieved
- All 25 home BP cuffs have been given out along with most of scales
- Placing a bulk order of more supplies soon
- Other needed supplies for clients in this era of COVID?
 - Phones with minutes
 - Diapers in certain sizes + formula

















HEALTH
CARE for
HOMELESS